



THE HICKORY B

1,918 SQFT

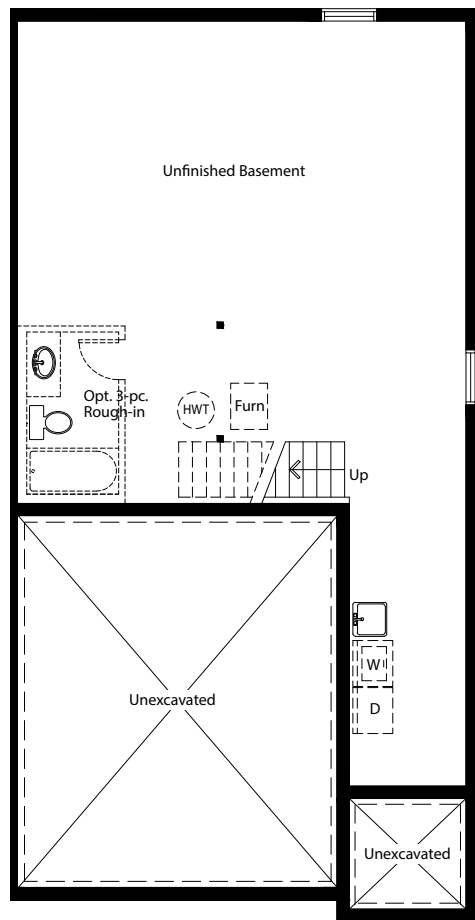


Quality built by
winzen

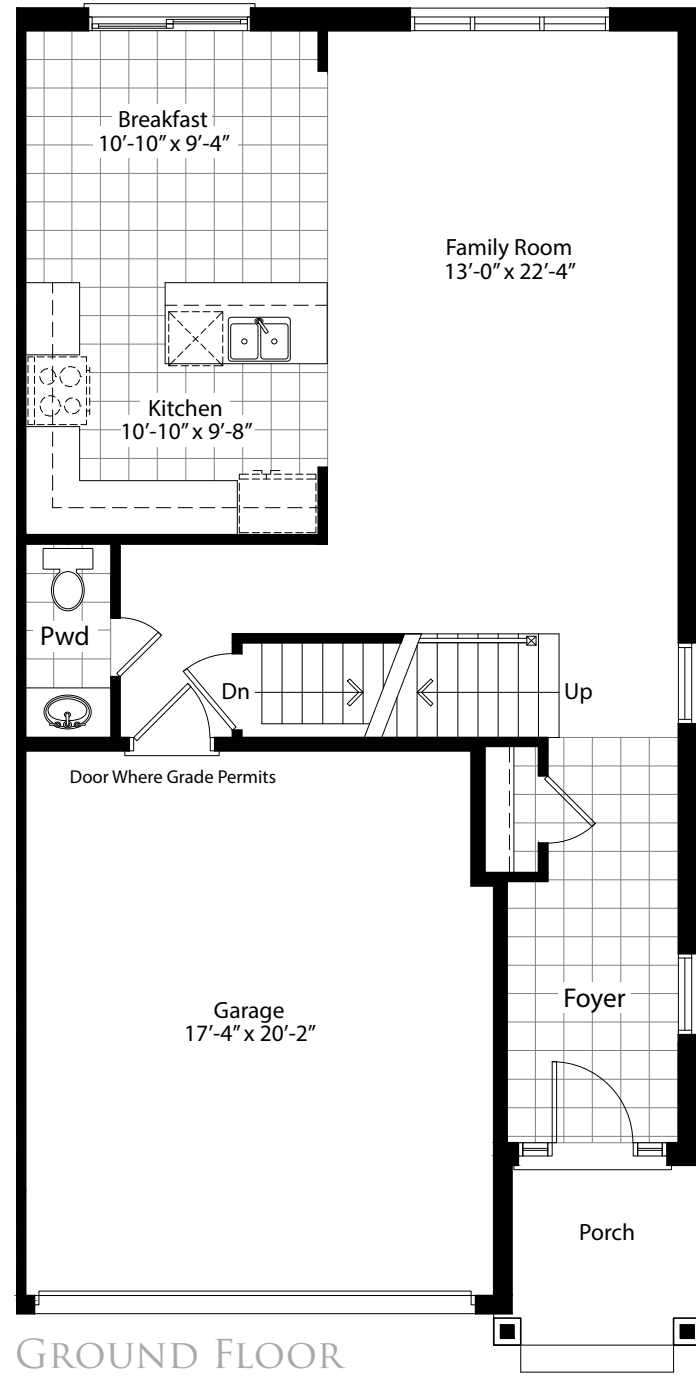


THE HICKORY

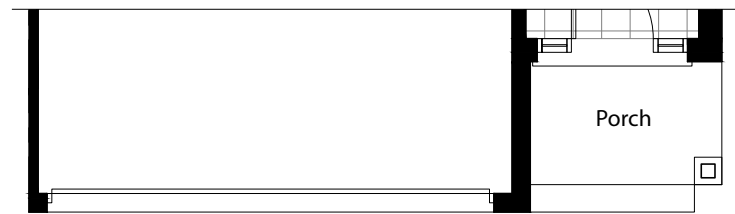
1,918sqft



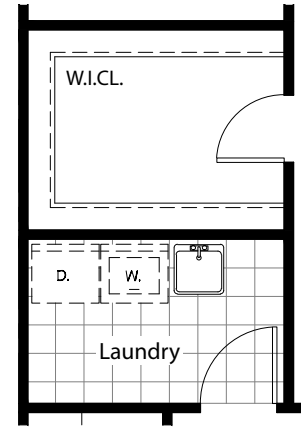
BASEMENT



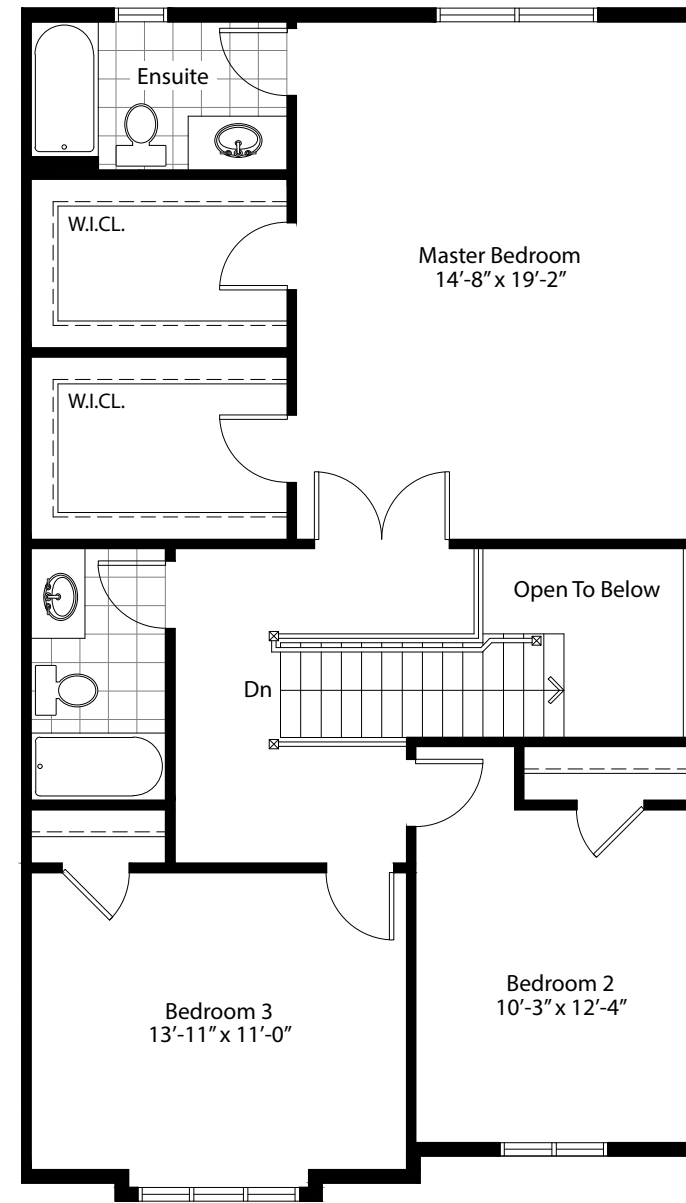
GROUND FLOOR



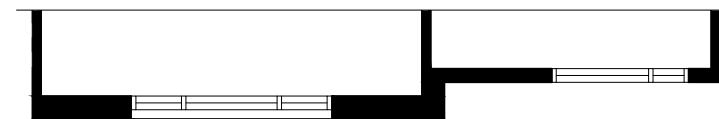
GROUND FLOOR (ELE B)



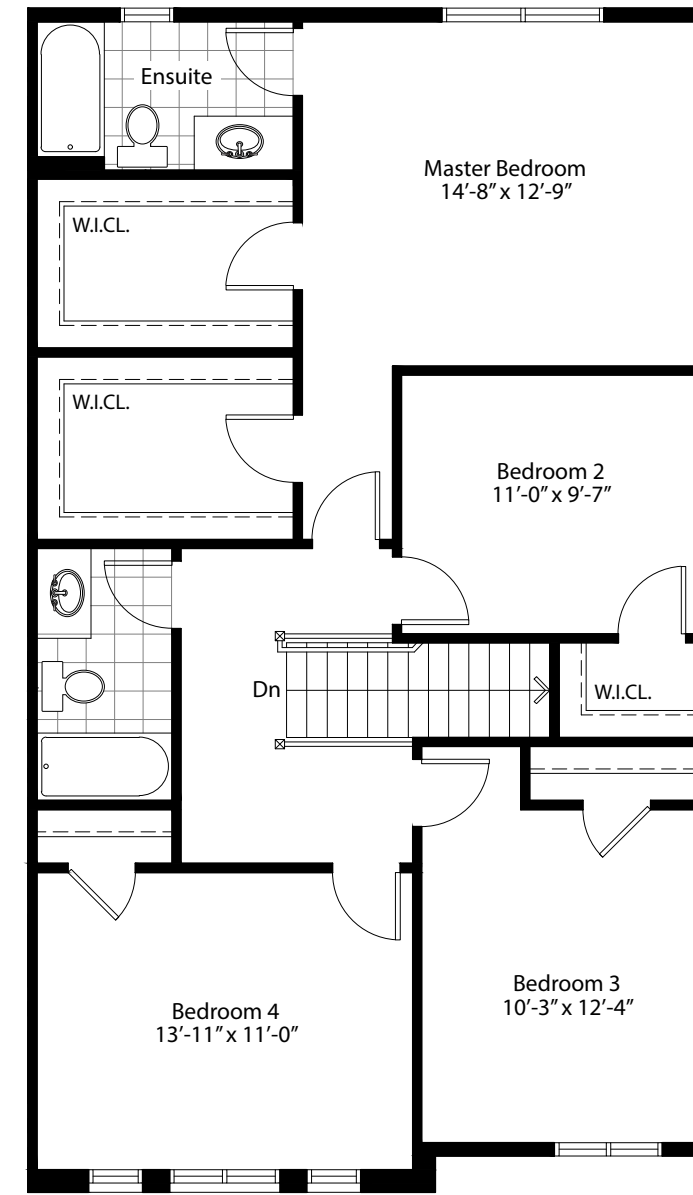
SECOND FLOOR
OPT. LAUNDRY



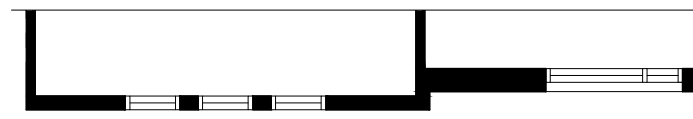
SECOND FLOOR
3 BEDROOM



SECOND FLOOR (ELE B)
3 BEDROOM



SECOND FLOOR
4 BEDROOM



SECOND FLOOR (ELE B)
4 BEDROOM

Plan shown is elevation A only. Floor plans may change with elevation. Orientation of unit may be reversed and purchaser agrees to except the same. Construction of dwelling may not be exactly as shown. Some windows shown on side elevation may not be available due to the applicable side yard set back accordingly. All details, dimensions, treatments, specifications and features shown may be changed by the vendor, the municipality, the developer, or the vendor's control architect in their sole and unfettered discretion at any time without notice. Actual usable floor space may vary from stated floor area. Due to site conditions and engineering or structural requirements, individual roomsize dimensions may vary. Square footage is measured using the methods and tolerances prescribed by bulletin 22 published by The Tarion Warranty Corporation. Features identified as "optional" or "opt" are an additional cost and may not be available based on the stage of the construction of the home. The location of features such as electrical panels, hot water tanks, sump pumps, or furnaces may change due to the site conditions or engineering requirements. Mechanical wall encroachments, bulkheads or boxouts may be required into finished rooms and garage spaces. Features shown "where grade permits" may not be available based on the grading of the land and may in some cases may require an alternate location and adjacent floor areas to be sunken. Number of steps in all entryways and porches may vary due to grade. Schedule B attached to the legal agreement supersedes these brochure drawings. E. & O.E.